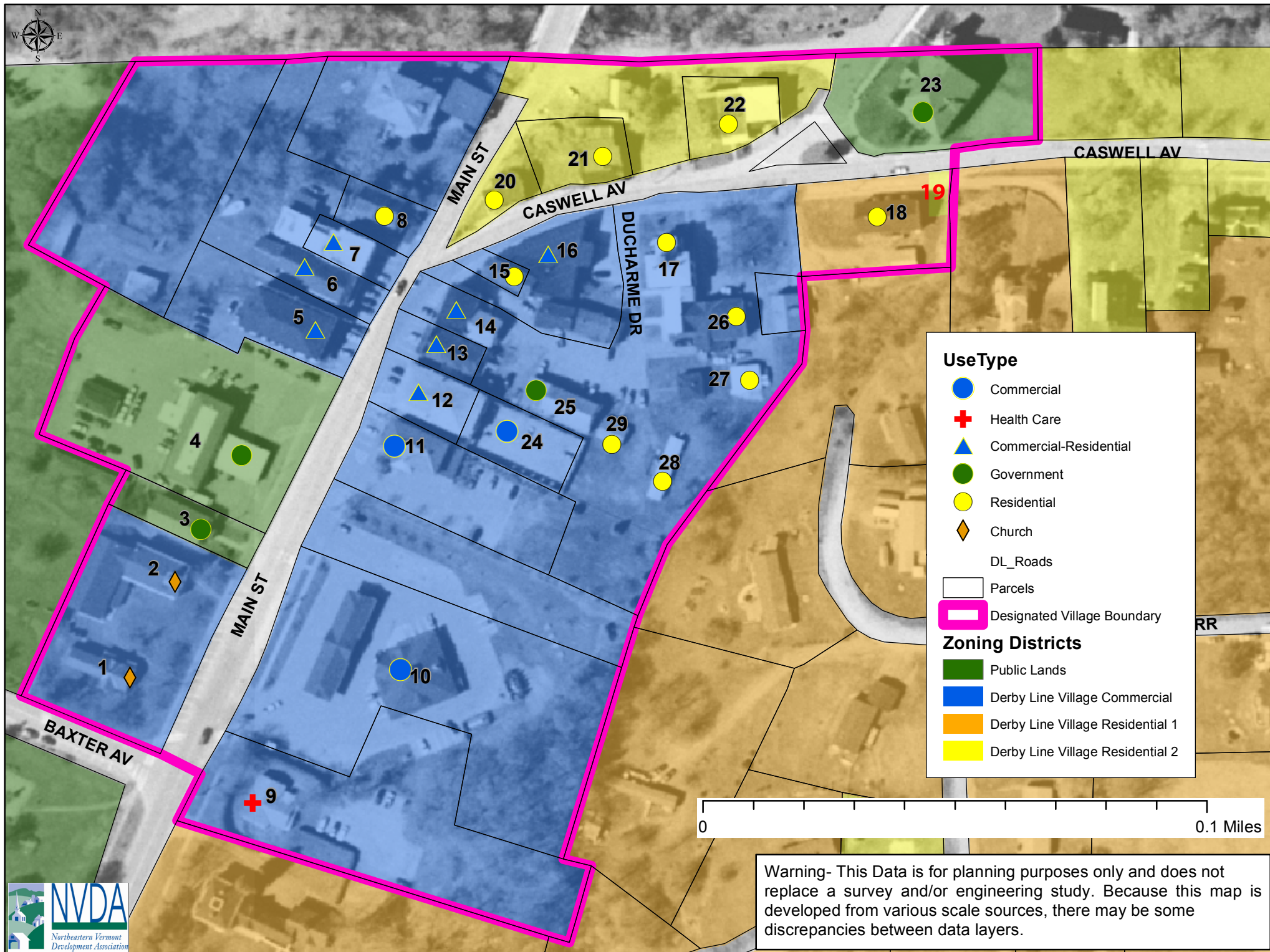


**Village Designation  
Derby Line, VT  
01/30/2013**

**Board Approved  
2-25-2013**



**UseType**

- Commercial
- + Health Care
- ▲ Commercial-Residential
- Government
- Residential
- ◆ Church
- DL\_Roads
- Parcels
- Designated Village Boundary

**Zoning Districts**

- Public Lands
- Derby Line Village Commercial
- Derby Line Village Residential 1
- Derby Line Village Residential 2

1. Universalist Church Parsonage, 1830, State Register of Historic Places, VHHSS#1007-8
2. Universalist Church, 1840, State Register of Historic Places, VHHSS #1007-7
3. Derby Line Village Hall, c. 1885
4. University States Border Inspection Station, 1932
5. Mixed-use building, c. 1880
6. Mixed-use building, c. 1890 vacant
7. Mixed-use building, c. 1890
8. Single-family house, c. 1890
9. Border Health Center, c. 1990
10. Irving Oil Gas Station, 1998
11. Community National Bank, 1874, State Register of Historic Places, VHHSS #1007-4
12. Mixed-use building, c. 1916
13. Mixed-use building, c. 1913
14. Mixed-use building, c. 1890
15. Apartment building, c. 1880
16. Mixed-use building, c. 1920
17. Ducharme Apartments, c. 1875
18. Single-family house, c. 1880
19. Single-family house, c. 1875 house removed
20. Single-family house, c. 1875 2 unit apartment
21. Apartment house, c. 1900
22. Apartment house, c. 1890
23. Haskell Free Library and Opera House, 1901, National Historic Landmark
24. Alberghini Garage, 1916 roof removed only walls remain
25. Village garage, 1880
26. Apartment house, c.1890/1910
27. Single-family house, c. 1920
28. Mobile home, c. 1980
29. Single-family home, c. 1940

Warning- This Data is for planning purposes only and does not replace a survey and/or engineering study. Because this map is developed from various scale sources, there may be some discrepancies between data layers.

**New Owners**  
 5 & 6 Main Street Place LLC  
 10 Cobalt Properties LLC  
 15 Scott Shipley  
 12,13,20,21,22,24 are Doug Spates/ Mempremagog Rental properties

